

# Glassmate

## High Performance Underbench Glasswasher

**New  
Model**



### Glassmate Features & Benefits

- Compact size, ideally suited to modern bars
- High 250mm wash chamber, will accept beer jugs, wine carafes & champagne flutes
- Sparkling clean glasses in 30 seconds
- Automatic detergent injection, giving consistent result on every load
- Metal triarm rotary spinner, for better wash coverage
- Easy to operate, select cycle & press button
- Selectable cold cooling down rinse to assist with cooling down of glasses
- Durable double skinned door to reduce heat loss & noise
- Safety cut out on door activates if cycle is interrupted, ensures operator safety
- 3 Kilowatt element power, for quicker recovery between loads
- Superior wash from a 375 watt - 0.5HP wash pump
- Comes standard with 1 x 430 x 360 mm coated wire basket/rack
- Can be supplied with plastic baskets & divider pegs (sold separately) for wine & tall glasses
- Simple & cost effective to install, comes with hot & cold connection hose & 15 amp electrical lead
- Gravity drain, just connect to an S or P trap
- Suitable for installation in areas of low water pressure
- Service friendly machine, easy repair access from the front of the machine
- Spare parts readily available, to get you up & running with minimum disruption
- High grade all stainless steel welded construction for durability & longevity
- Proudly Australian made & owned your money re circulates in our economy
- All Norris machines are supported by a nationwide network of service agents
- SAI Watermark approved, connect directly to the water supply
- All Norris models comply with the Food Hygiene Regulations, worry free compliance
- Every machine is factory tested before packaging
- 2 Years or 30,000 cycle parts & labour warranty, machine must be registered at [www.norris.com.au](http://www.norris.com.au)
- Extra 1 year or 20,000 cycle warranty available may be purchased by calling Norris PH: 1800 803 569
- Fast, efficient & reliable customer service, is just a call away 1800 803 569

**Best  
Industry  
Warranty**



**NORRIS**  
Commercial Glass & Dishwashers

## Glassmate Warranty

Norris machines have always been known for their strength & reliability  
And now we offer the Best Industry Warranty on the Glassmate

- 2 Years on the Cabinet\*
- 2 Years on the Parts\*
- 2 Years on the Labour\*
- \* If the online registration is completed
- It's easy go to [www.norris.com.au/warranty](http://www.norris.com.au/warranty), choose warranty registration
- Complete & submit the form

OR

- 30,000 cycles (whichever comes first)
- Note: Only applicable on machines sold in the Commonwealth of Australia

**If warranty registration is not completed via the web, the warranty reverts to the standard 12 months parts & labour.**

No web access please call us 1800 803 569 to register.

Warranty is subject to the terms & conditions supplied with the machine.

Warranty is not transferable

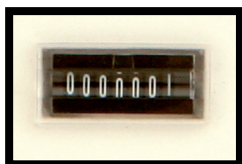


## Glassmate - Extended Warranty

Protect your investment

Extended warranty option is now available

- When you purchase your new Norris Glassmate you can choose to purchase an extended warranty
- This option extends the total period of cover on parts & labour giving you peace of mind
- It covers you for an extra (1) year or 20,000 cycles taking the total warranty cover to 3 years or 50,000 cycles (whichever come first)
- Eliminates unexpected repair bills in the first 3 years or 50,000 cycles
- Offers you hassle free service, Norris co-ordinates technician & parts for you
- Provides support from our nationwide network of service agents
- Saves time & money, one service call could more than pay for the cost of the extended warranty
- This option may only be purchased within 30 days of the original sale of the glass/dishwasher
- This option is only available through Norris Industries please contact us for pricing
- To purchase either complete the enclosed warranty form & return it to Norris or contact us
- Free call on nation-wide number 1800 803 569
- See note above for conditions



## Glassmate - Specifications

### Dimensions

Height (incl. legs)	850-875mm
Height (Cabinet)	700mm
Legs	150-175mm
Width	505mm
Depth	545mm
Depth (door open)	820mm
Load Height	535-560mm
Usable wash height	250mm
Basket/Racks	430 x 360mm
(1 x PVC coated wire rack supplied Plastic rack available upon request)	

### Capacity

Loads per Hour	60*
Wash/Rinse Pump	380 watts - 0.5hp
Rinse tank capacity	20 litres
Rinse tank element	3000 watts
Wash temperature	82° - 88° C
Rinse temperature	82° - 88° C
Detergent injection	10 - 20 ml/cycle
Total cycle time	30 seconds
Wash cycle time	5 seconds
Rinse cycle time	10 seconds
Optional rinse time	15 seconds hot/cold
Hot water usage	Hot/Cold 4 litres Hot/Hot 8 Litres

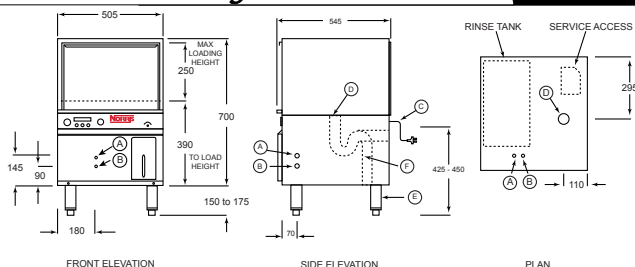
### Plumbing

Hot water	1/2" BSP
Cold water	1/2" BSP
Waste	2" BSP
Water pressure	140 - 400 kPa 20 - 142 PSI
Drain	Gravity
Electrical	
Volts/Hz/Amps	230V AC 50 Hz 15 amp

Notes:

1. \*Cycles per hour are dependent on the cycle selected, the incoming water temperature & pressure
2. If connected to only cold water, the programme length will exceed the specified values
3. Norris recommends main pressure hot water systems
4. In areas of hard water Norris recommends investing in a water conditioner system on the incoming water.
5. Plastic 430 x 360 mm racks are available upon request
6. Correct at the time of publishing, Norris is continually developing & upgrading its products & reserves the right to alter specifications without notice

## Glassmate - Diagrams



- A) Hot water - 1/2" BSP
- B) Cold water - 1/2" BSP
- C) Electrical Lead (1.5m) 15 amp
- D) Drain 50mm BSP
- E) Adjustable Legs (150 - 175mm)
- F) S or P trap (not supplied)



## Contact us

**NORRIS** ...The Clean Winners!

28 Strathmore Road, Caves Beach, NSW 2281

PO Box 246 Swansea, NSW 2281

02 4971 4500 1800 803 569 02 4972 1064 or 02 4971 2544 (Spare parts)

[www.norris.com.au](http://www.norris.com.au) [sales@norris.com.au](mailto:sales@norris.com.au)

Proudly Distributed by: